



istockphoto: RapidEye

Ms. Particular Presents: Setup vs. Set up

Celia M. Elliott
Department of Physics
University of Illinois



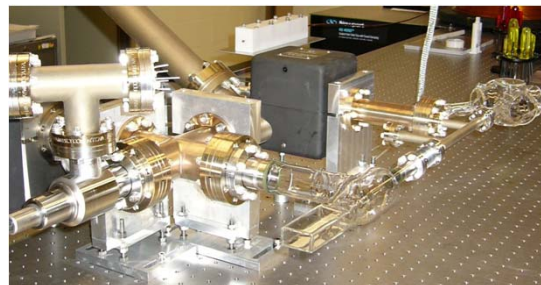
Copyright © 2011
Board of Trustees of the University of Illinois

“Setup” (written closed) is a noun

**Use it to describe a collection of equipment
designed to perform a specific function or
the way something is organized or arranged**

**Think: an apparatus is a setup—they’re both
one-word nouns**

**Fig. 1. Vacuum setup in
the DeMarco lab.
The vacuum system
is pumped by 20-l/s and
40-l/s ion pumps and a
Ti sublimation pump.**



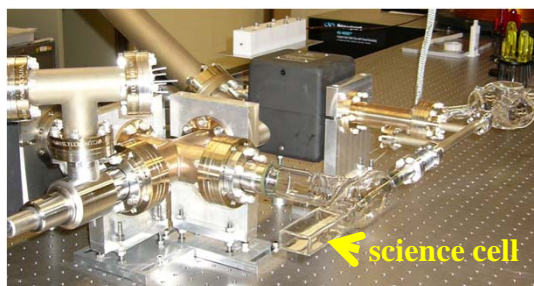
Courtesy Brian DeMarco

“Set up” (written open) is a verb

Use it to describe how an action is performed

If it comes after a “to be” verb, or if you can insert “it” between “set” and “up” and still have the phrase make sense—write it as two separate words

Fig. 2. The system is set up so that magnetic trap lifetimes in the science cell are >5 min.



Courtesy Brian DeMarco